



A dynamic community that celebrates and supports *Arts and Creativity!*

Red Deer Arts Council and Red Deer Public Library are excited to present

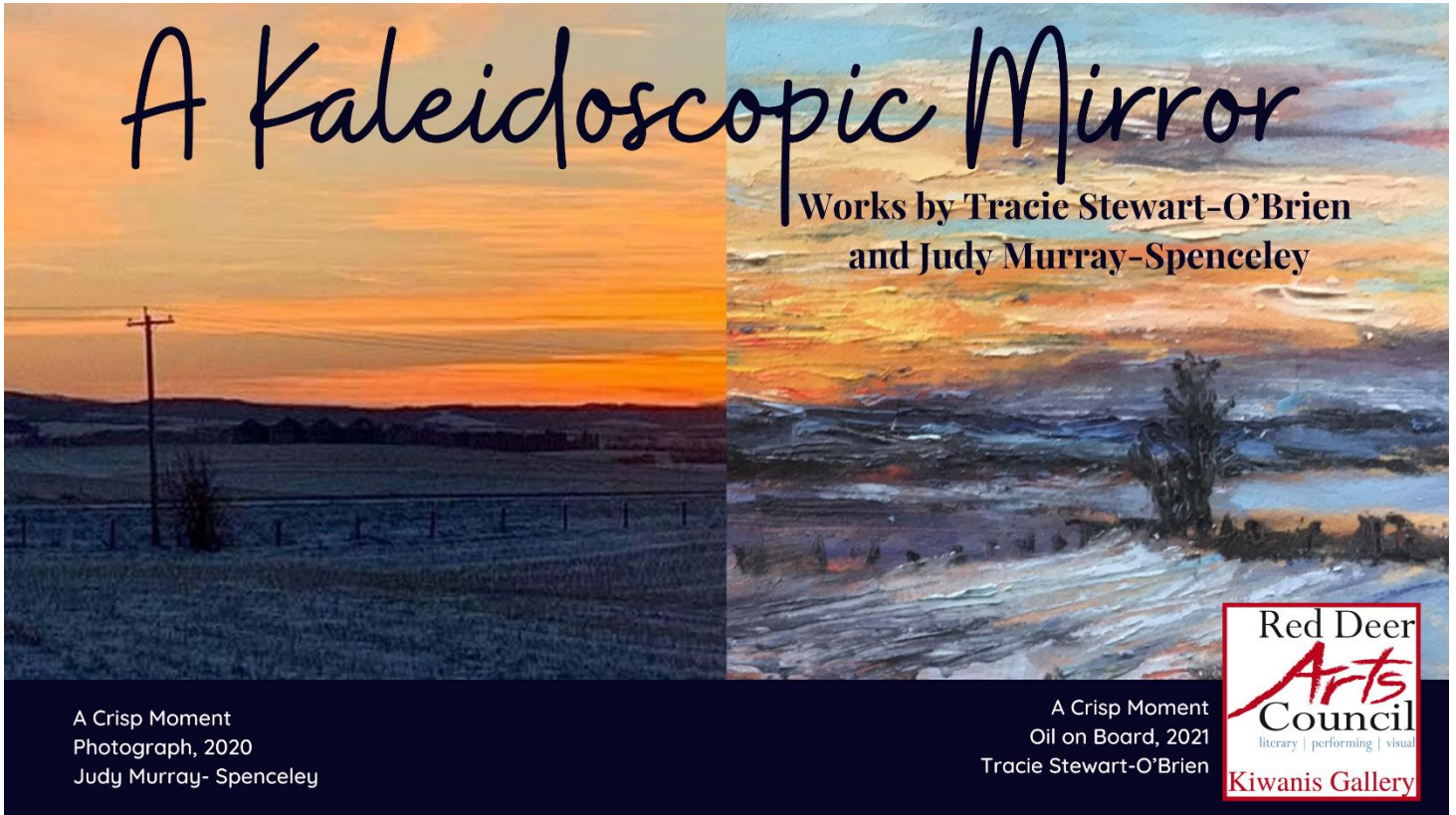
# A Kaleidoscopic Mirror:

**Works by Tracie Stewart-O'Brien and Judy Murray-Spenceleley**

running in the Kiwanis Gallery from October 18 to November 27, 2022.

#FirstFridaysRedDeer Opening Reception November 4 from 5:30 to 7:30 pm.

Refreshments served. The artists will be in attendance.



A Crisp Moment  
Photograph, 2020  
Judy Murray- Spenceley

A Crisp Moment  
Oil on Board, 2021  
Tracie Stewart-O'Brien

## 50<sup>th</sup> Anniversary of CARTA

We are pleased to present artworks, archives, and display materials from 50 years of the **Central Alberta Retired Teachers' Association** at our Community Gallery. Let's celebrate local teachers who've made such an impact on our community throughout November.

#FirstFridaysRedDeer Opening Reception

November 4 from 5pm – 7pm with CARTA members in attendance.

**The Red Deer Arts Council's New Community Gallery**

6 – 4919 49 Street, Downtown Red Deer

Gallery Hours: Wednesday – Friday, 10am – 4pm and by appointment.



RED DEER & DISTRICT  
COMMUNITY  
FOUNDATION  
all for community.



servus  
credit union

~Creativity Understood~

## What's Happening in November 2022

### Art Speaks Learning Series *Richard Beaune: Audience Development for Performing Artists*



**November 23, 2022 / 6:30-8 pm**  
at the Red Deer Museum + Art Gallery  
\$10/regular; \$8/MAG & RDAC members (+GST)  
Register at [reddeermuseum.com](http://reddeermuseum.com)

Business of Being an Artist Series

**Audience Development for Performing Artists**  
with Richard Beaune,  
Director of Prime Stock Theatre



We're excited to present our next Art Speaks Learning Series talk for 2022. Join Richard Beaune, Director of Prime Stock Theatre, on Wednesday November 23, 2022 for a talk on developing an audience for performing arts in Red Deer. His talk will focus on how we engage an audience and how can we keep them engaged in our work.

This presentation takes place at the Red Deer Museum + Art Gallery from 6:30 – 8pm. Pre-registration required, \$8 members/ \$10 non-members.

### Help the Red Deer Arts Council name our New Gallery!

We are accepting suggestions by email to [info@reddeerartscouncil.ca](mailto:info@reddeerartscouncil.ca). Suggestions will be juried, and a short list recommended to the Board of Directors for final decision. Some inspiration for a creative name/ our hopes for the space: a welcoming, inclusive space for artists of all backgrounds and levels of experience to grow their art and creativity. If your name is selected, we'll celebrate you at an upcoming unveiling!



Together we give.

UNLEASH GENEROSITY

Every year, on GivingTuesday, we mobilize millions of people across the globe (almost 70 countries) to show up, give back, and change their communities. The goal is to create a massive wave of generosity that lasts well beyond that day, and touches every person on the planet.

Red Deer Arts Council

GIVING TUESDAY

November 29, 2022

### November 29 is Giving Tuesday!

We have amazing programs like The Hub 2.0, Ross Street Singers, the In the Neighbourhood Concert Series, the Kiwanis Gallery, and so much more! Help us continue to support and promote arts in our community. Your donations make a huge impact! Join us!

### Autumn Poetry Workshop with the WGA!

Red Deer Arts Council and the Writers' Guild of Alberta are excited to co-present an in-person poetry workshop on Friday November 11th, 1 – 4pm, led by Colin Martin. This workshop, entitled **An Informal Engagement: Verse**

## JOIN OUR BOARD



**and Verse Libre** will include both form, and non-form poetry writing.

Please register at <https://signup-can.keela.co/WGA-poetry-workshop>. Attendance by donation. Bring your own beverages and snacks for this afternoon of writing and connecting with the writing community.

**Board Member Recruitment** We are currently seeking new Board Members to help support the growing work of the Red Deer Arts Council. Please contact Suzanne at the office, [info@reddeerartscouncil.ca](mailto:info@reddeerartscouncil.ca) to hear more about the opportunity.



Writers' Guild of Alberta & Red Deer Arts Council

present


**AUTUMN POETRY WORKSHOP**

Led by **COLIN MARTIN**

NOVEMBER 11, 2022 1 - 4PM

5 - 4919 49 STREET, RED DEER, AB

SIGNUP AT  
[HTTPS://SIGNUP-CAN.KEELA.CO/WGA-POETRY-WORKSHOP](https://signup-can.keela.co/WGA-POETRY-WORKSHOP)



## From Water's Edge to Watercolours: Former Planner Makes Impression on Red Deer Visual Art

*With photos submitted by Carol Lynn Gilchrist*

When Carol Lynn Gilchrist retired from her career as a community planner, she had already planned to work just as hard at being a landscape artist.

"I have always been a person that likes to be busy," she says. "When I retired in 2011, I started painting immediately because I felt compelled to be an artist."

What she didn't see on the horizon was owning a gallery. Although open only one day a week, Riverlands Studio and Gallery is a place for Alberta artists – primarily local, and especially women – to display work and build reputations.

Formerly Gallery IS, the space came available when previous owner Jeri Lynn Ing moved away. Open Wednesday afternoons (or by appointment), Riverlands started featuring guest artists in September 2021. There is no formal application process; Gilchrist has plenty of artist friends without gallery representation to choose from. "I'm winging it."

Acquiring the gallery was really about the studio space in the back, though. Ing had allowed Gilchrist frequent access to the studio, so it was a fairly natural transition to take it over. Since then, Gilchrist has made her passion full-time.

"Over the last year I've created 180 works," she says. "It's been a highly productive time." Gilchrist was hardly relaxing before that, however. Since 2013 she's had about one solo gallery show per year, along with participating in several joint shows. She started with watercolour, painting landscapes en plein air or in her tiny home studio.

Her work has since shifted to acrylic and now heavily to oils. She describes her work as impressionistic across all three media, although her work in architectural design has always maintained a subtle role in the abstract shapes and lines of the underlying composition. "I'm not concerned with the detail, I'm concerned with shapes."

She has always been bonded to nature, as a "child of the '60s" who explored freely and spent family vacations camping, often near the West Country road and dam projects where her father worked. Her father also influenced her career choice in architectural design, which led to decades of work with the Red Deer Regional Planning Commission. That in turn developed her strong fascination with water.

"I was lucky enough to be responsible for all the flood-risk mapping in the commission area," she says, recalling taking pictures from airplanes and monitoring flood waters on site.

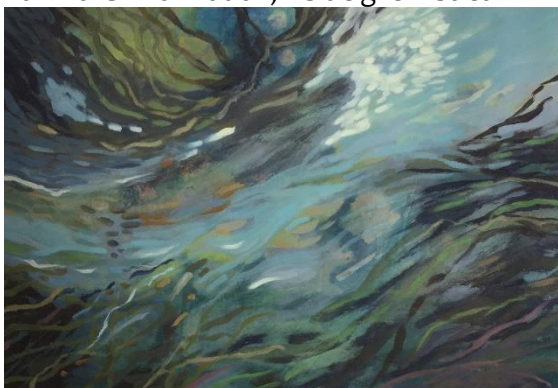
That aqueous allure inspired a recent acrylic series studying marshlands, which dominates the front window of her gallery. But when it was declined for an upcoming duo show at the Red Deer Museum and Art Gallery (opening Dec. 2), she responded with a series of broad landscapes in oil, more reflective of her original plein air style.

"For me it is about that atmosphere and perspective," she says.

Like the landscapes and shorelines she loves, her artistic endeavours are constantly changing. She's planning to start hosting classes and workshops in the new year. And her next show, scheduled for next summer at the Kiwanis Gallery, will be figurative works based on the poems of Mary Oliver.

"A big jump," she says.

For more information, visit [clgilchrist.com](http://clgilchrist.com). Riverlands Studio and Gallery is at 5123 48th St. in Red Deer.



Two works by Carol Lynn Gilchrist, "Shifting Shapes and Flow" and



"Frozen Creek" both on display at Riverlands Studio and Gallery.